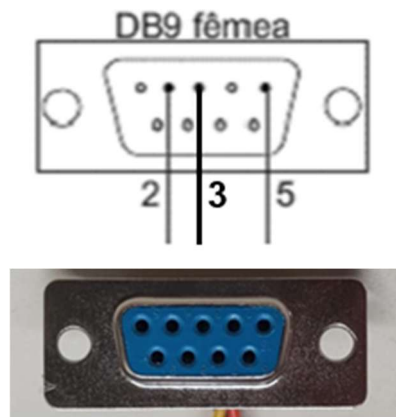
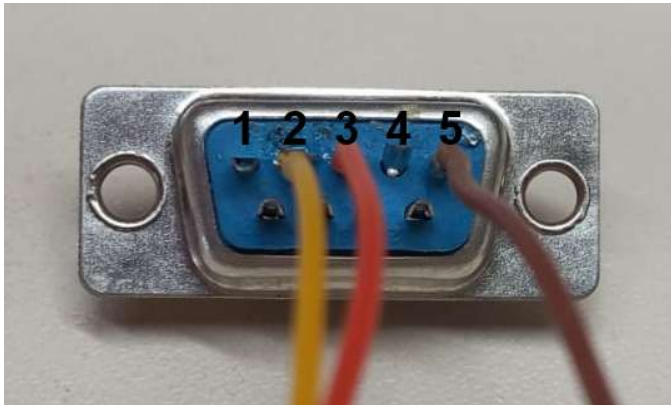


RFIDCC

 Tecnologia Brasileira

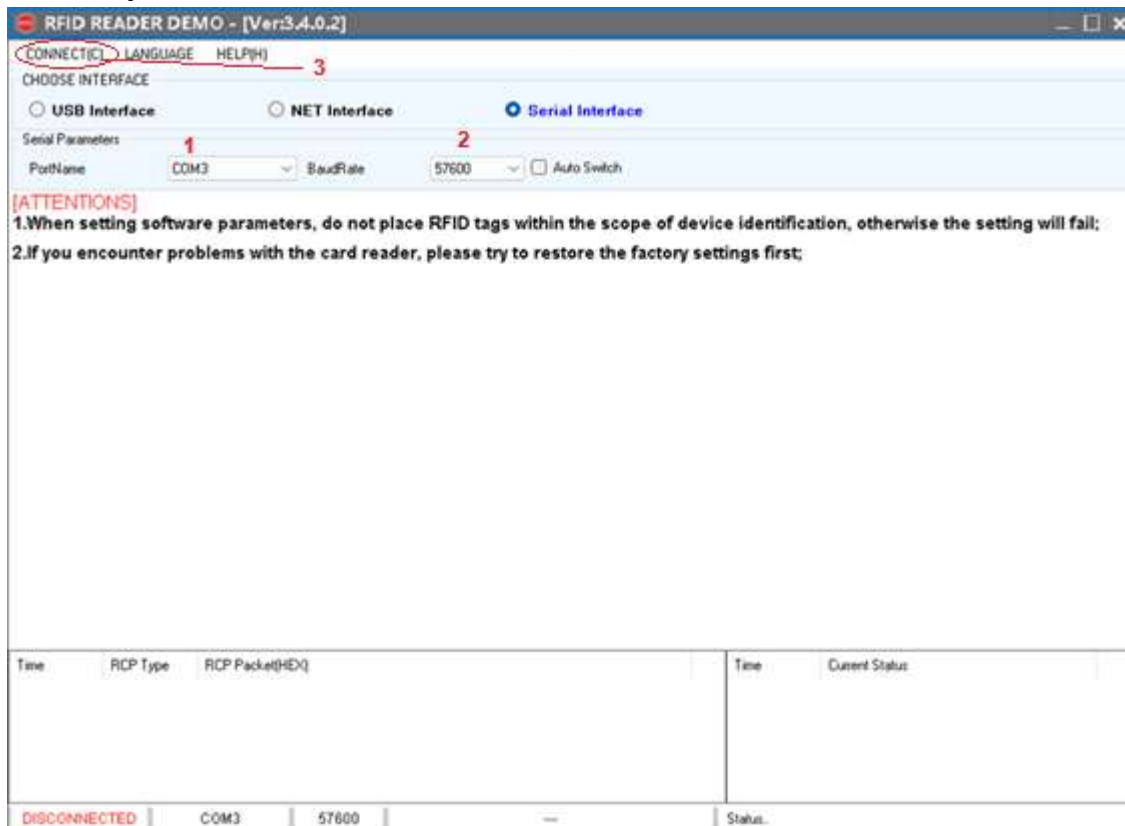
PTG3: Como passar de 1 segundo para 10 segundos o Tempo de Sombra

1- Conector DB9 fêmea



Ligar o fio amarelo no pino 2, o laranja no pino 3 e o marrom no pino 5 do DB9 fêmea

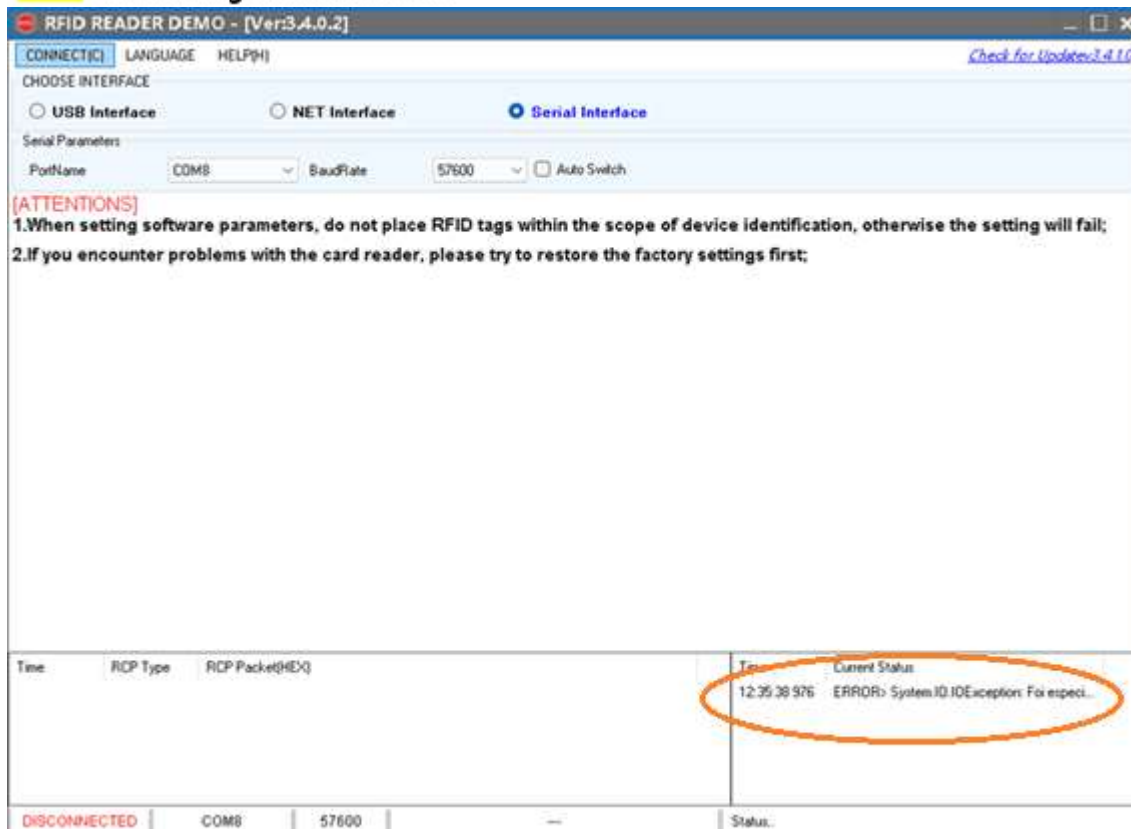
2- Aplicativo



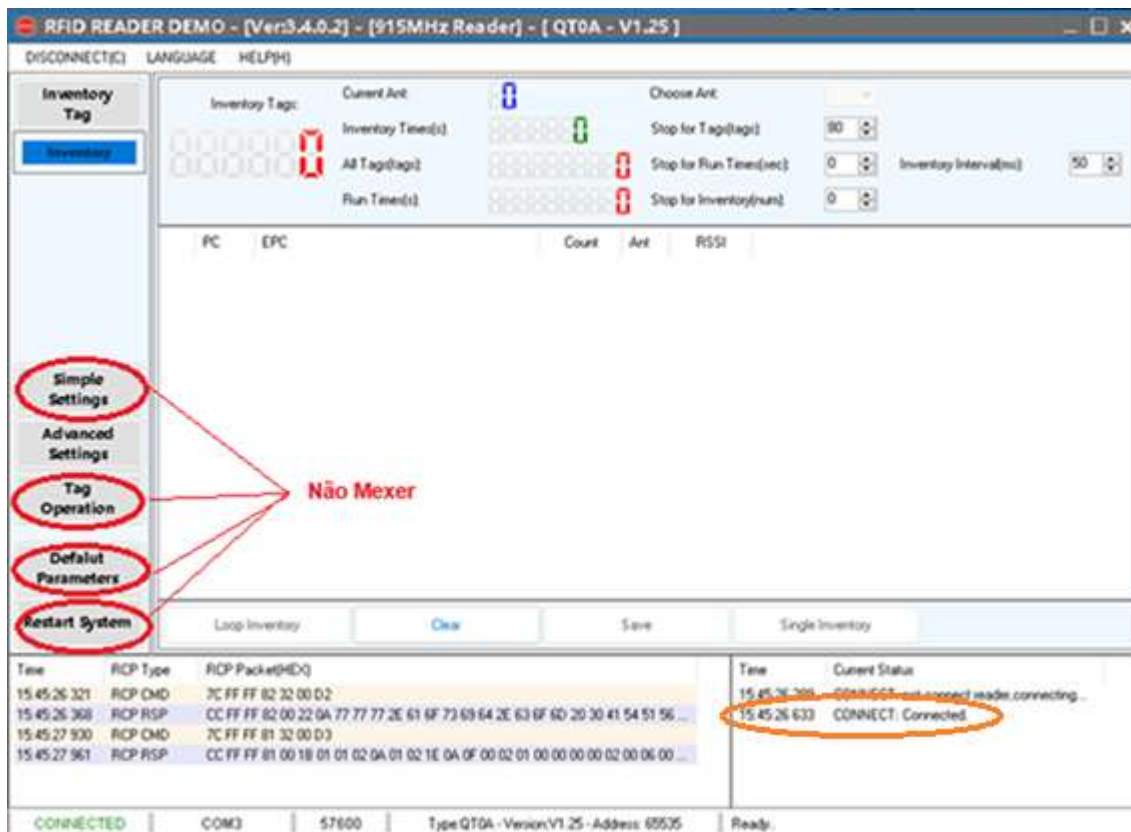
- 1- **Selecione a COM**
- 2- **Coloque a velocidade em 57600**
- 3- **Click em conectar**

RFIDCC

Tecnologia Brasileira



Problema com o conversor USB. Conversor não suporta a versão de Windows.



Conectado

RFID Cartões Comerciais Ltda Phone: +55 19 3258-5545
Rua Sapopemba, 25 cep 13104-170 Campinas – SP
email: rfidcc@rfidcc.com.br web site: www.rfidcc.com.br

Revisão 1.0 02/2025

RFIDCC

Tecnologia Brasileira

The screenshot shows the 'RFID READER DEMO' software interface. The 'Advanced Settings' menu item in the left sidebar is circled in blue. A blue arrow points to it with the text 'Click aqui'. The main window displays various settings for the reader, including 'Inventory Tags', 'Current Ant.', 'Inventory Time(s)', 'All Tags(tags)', 'Run Time(s)', 'Choose Ant.', 'Stop for Tag(tags)', 'Stop for Run Time(sec)', 'Stop for Inventory(num)', and 'Inventory Interval(ms)'. At the bottom, there are buttons for 'Loop Inventory', 'Clear', 'Save', and 'Single Inventory'. A status bar at the very bottom shows 'CONNECTED', 'COM3', '57600', 'Type:QT0A - Version:V1.25 - Address: 65535', and 'Ready'.

Click nesse botão e aparecerá a tela abaixo.

The screenshot shows the 'RFID READER DEMO' software interface with the 'Basic Parameters Settings' screen. The 'Same ID interval' field is circled in blue. The settings include: 'Output Mode' (WGM), 'Work Mode' (Active), 'Byte Offset' (2), 'Byte', 'Out Interval' (30), 'Pulse Width' (10), 'Pulse Period' (15), 'Auto Read Type' (6C), 'Auto Read Interval' (10), 'Auto Read Delay' (1), 'Device Id' (002B0071044CC24E00000500), and 'RS485 Protocol Address Settings' (Address: 65535). At the bottom, there are buttons for 'Get', 'Set', and 'Default'. A status bar at the very bottom shows 'CONNECTED', 'COM3', '57600', 'Type:QT0A - Version:V1.25 - Address: 65535', and 'Ready'.

Substituir o 2 por 20

RFID Cartões Comerciais Ltda Phone: +55 19 3258-5545
Rua Sapopemba, 25 cep 13104-170 Campinas – SP
email: rfidcc@rfidcc.com.br web site: www.rfidcc.com.br

Revisão 1.0 02/2025

RFIDCC

Tecnologia Brasileira

Time	RCP Type	RCP Packet(HEX)
15.49.38.336	RCP CMD	7C FF FF 82 32 01 01 00
15.49.38.382	RCP RSP	CC FF FF 82 00 14 01 13 20 E0 00 00 01 88 BC 00 02 40 02 00 02 00 00 15 07 14 ...
15.49.38.492	RCP CMD	7C FF FF 82 32 01 02 CF
15.49.38.523	RCP RSP	CC FF FF 82 00 0C 00 28 00 71 04 4C C2 4E 00 00 05 00 A7
15.49.38.617	RCP CMD	7C FF FF 85 32 00 CF
15.49.38.648	RCP RSP	CC FF FF 85 00 02 FF FF B1

Click em Set e em seguida DESCONECTE

Especificações sujeitas a alterações sem aviso prévio