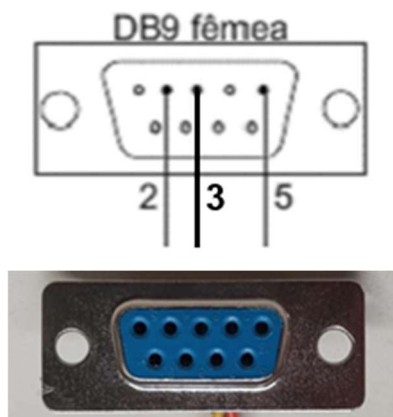
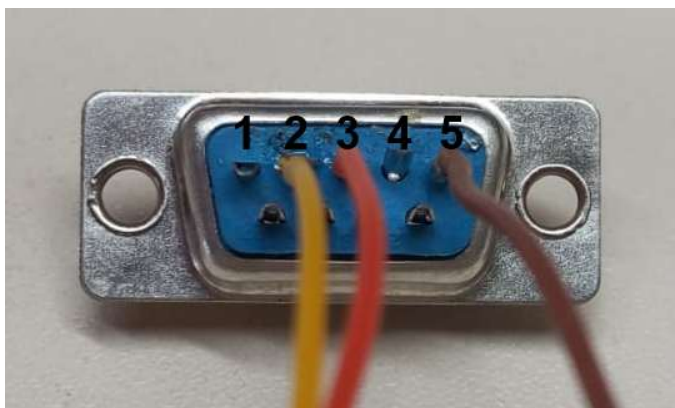


PTG3: Como passar de 1 segundo para 10 segundos o Tempo de Sombra

1- Conector DB9 fêmea

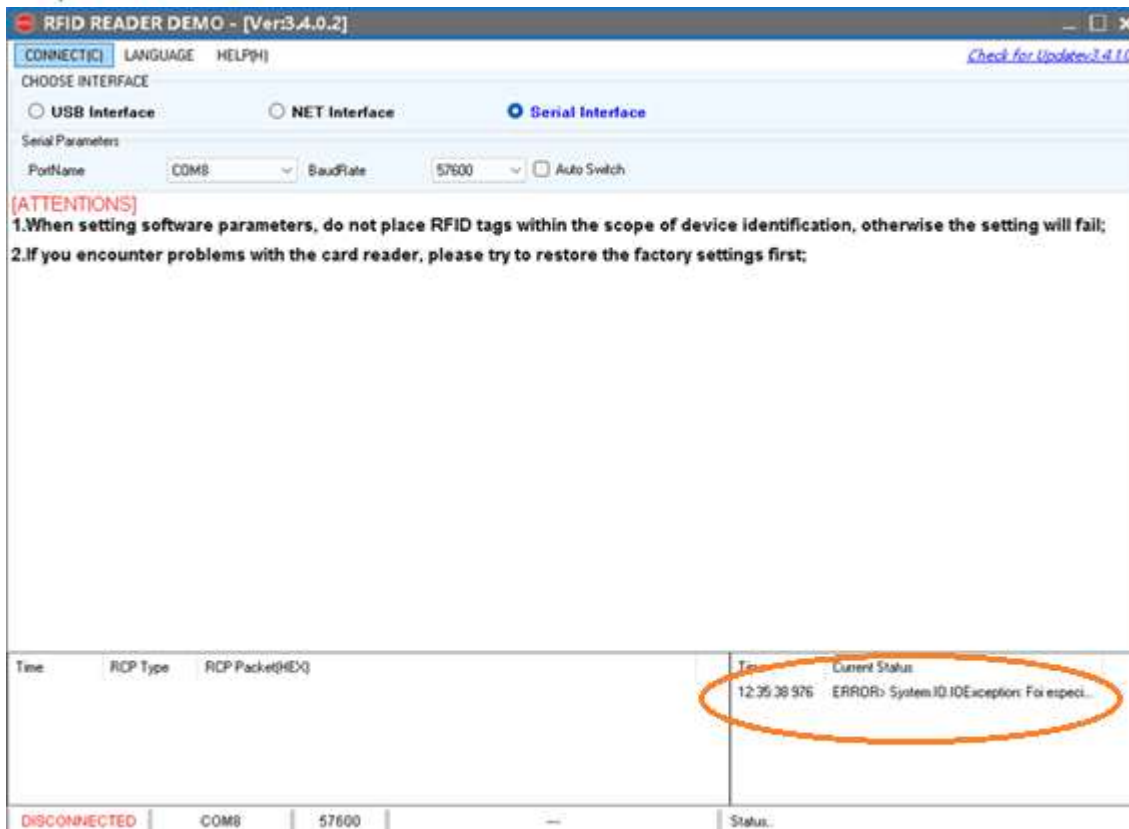


Ligar o fio amarelo no pino 2, o laranja no pino 3 e o marrom no pino 5 do DB9 fêmea

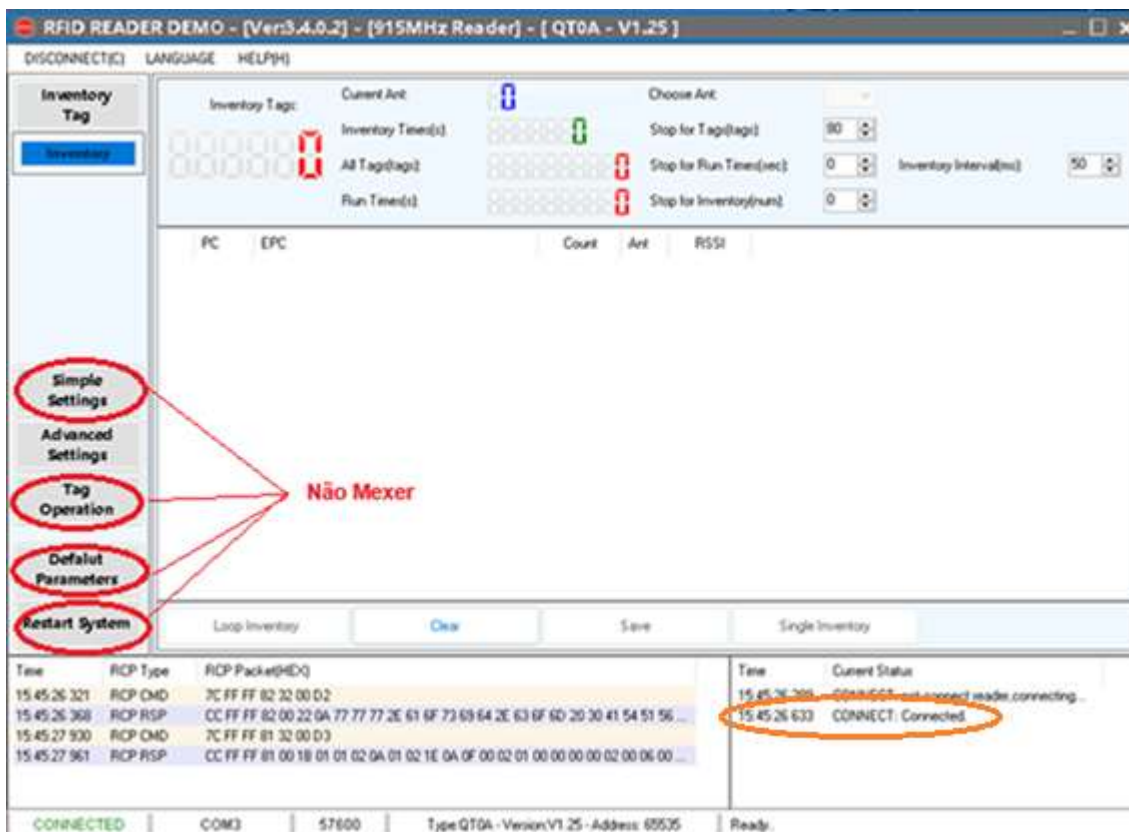
2- Aplicativo



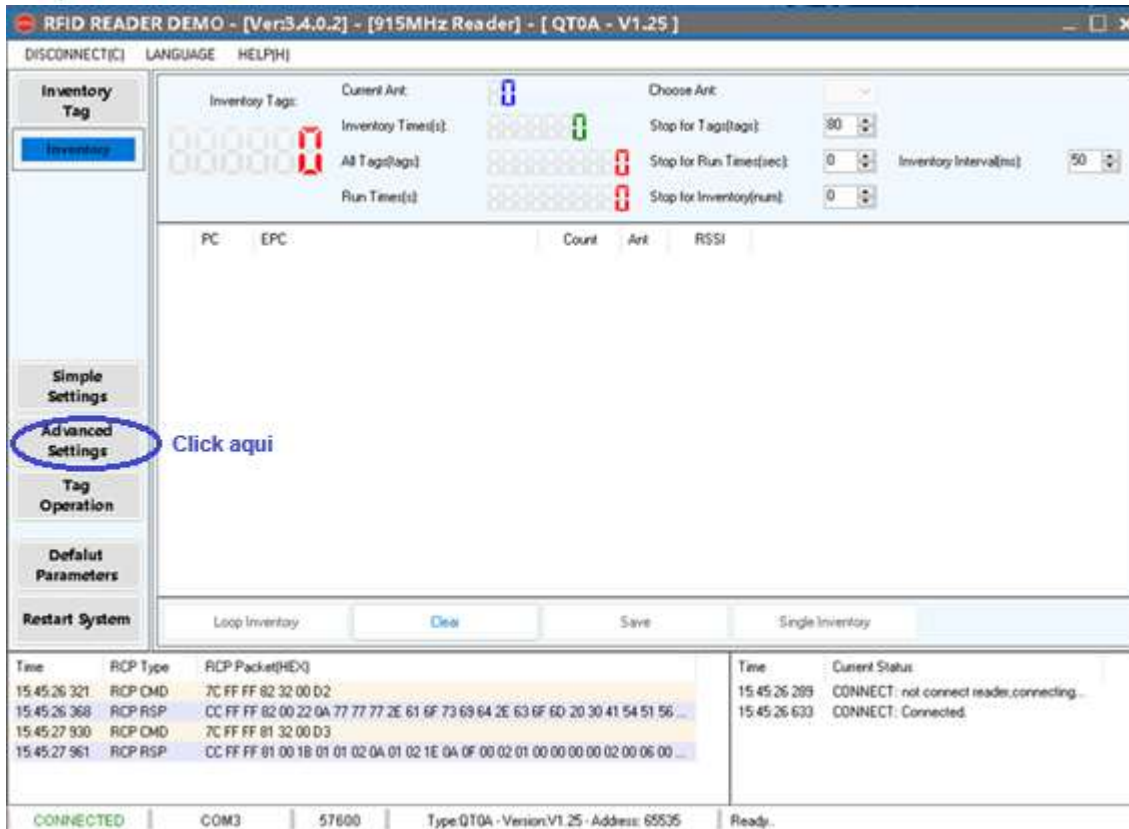
- 1- **Selecione a COM**
- 2- **Coloque a velocidade em 57600**
- 3- **Click em conectar**



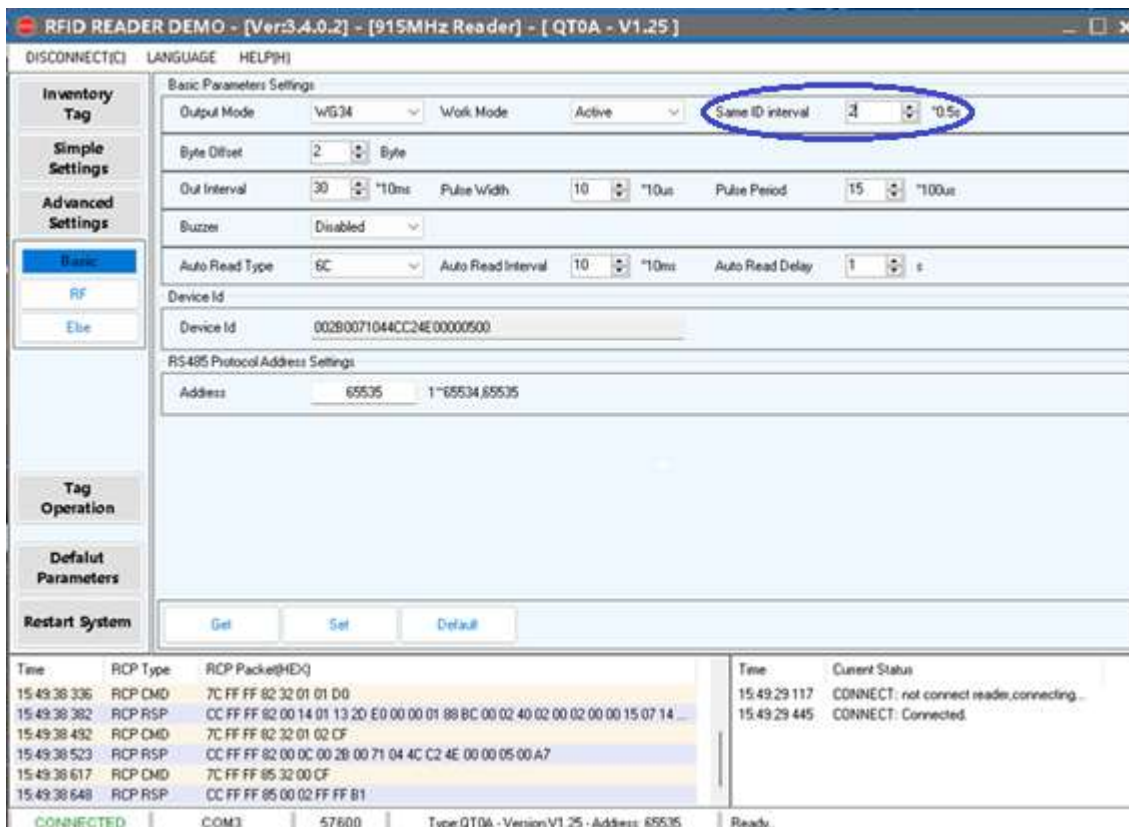
Problema com o conversor USB. Conversor não suporta a versão de Windows.



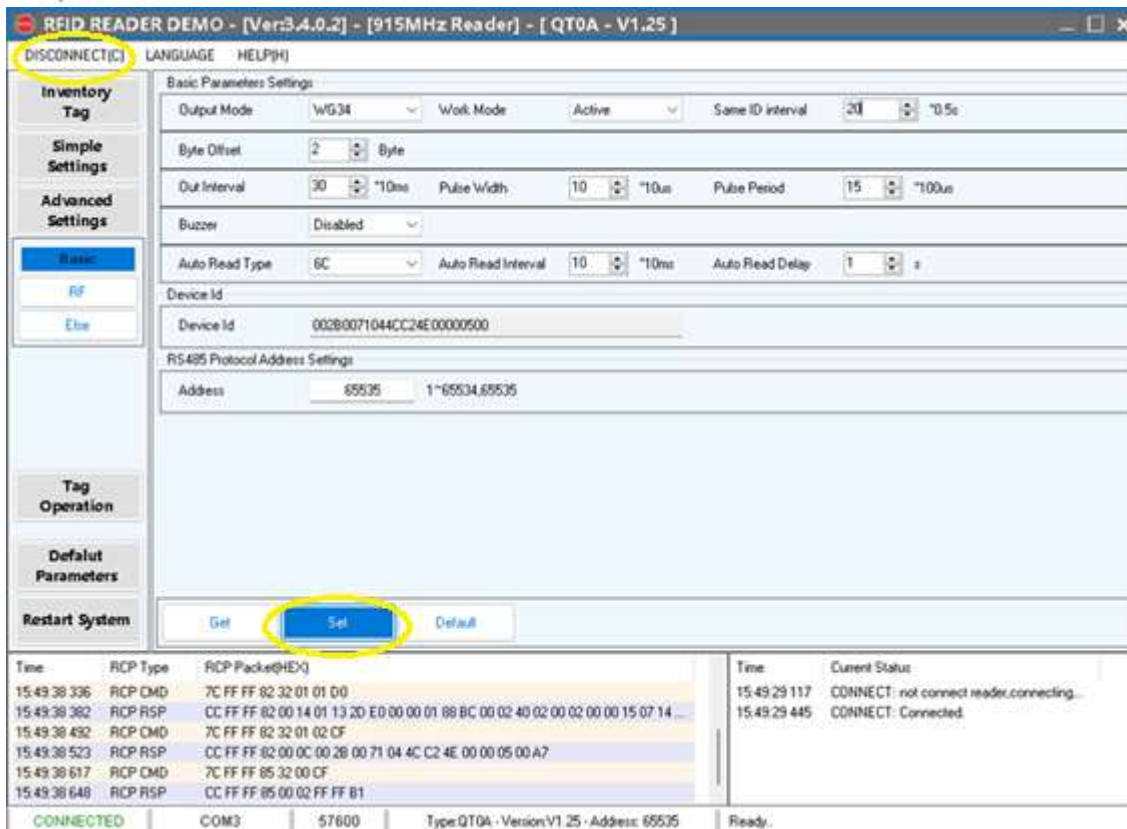
Conectado



Click nesse botão e aparecerá a tela abaixo.



Substituir o 2 por 20



RFID READER DEMO - [Ver:3.4.0.2] - [915MHz Reader] - [QT0A - V1.25]

DISCONNECT(C) LANGUAGE HELP(H)

Inventory Tag

Simple Settings

Advanced Settings

Basic

RF

Else

Tag Operation

Default Parameters

Restart System

Get **Set** Default

Time	RCP Type	RCP Packet(HEX)	Time	Current Status
15:49:38.336	RCP CMD	7C FF FF 82 32 01 01 D0	15:49:29.117	CONNECT: not connect reader.connecting...
15:49:38.382	RCP RSP	CC FF FF 82 00 14 01 13 20 E0 00 00 01 88 BC 00 02 40 02 00 02 00 00 15 07 14	15:49:29.445	CONNECT: Connected.
15:49:38.492	RCP CMD	7C FF FF 82 32 01 02 CF		
15:49:38.523	RCP RSP	CC FF FF 82 00 0C 00 28 00 71 04 4C C2 4E 00 00 05 00 A7		
15:49:38.617	RCP CMD	7C FF FF 85 32 00 CF		
15:49:38.648	RCP RSP	CC FF FF 85 00 02 FF FF B1		

CONNECTED | COM3 | 57600 | Type:QT0A - Version:V1.25 - Address: 65535 | Ready.

Click em Set e em seguida DESCONECTE

Especificações sujeitas a alterações sem aviso prévio