

USB 2.0 Serial Adapter User Installation Manual

Contents:

Introduction
Features & Specifications
System Requirements
Installing the Device
Disclaimer

Introduction:

The USB 2.0 Serial adapter is your smart and convenient accessory for connecting RS-232 serial devices to your USB-equipped Windows host computer. It provides a bridge connection with a standard DB 9-pin male serial port connector in one end and a standard Type-A USB plug connector on the other end. You simply attach the serial device onto the serial port of the cable and plug the USB connector into your PC USB port. It allows a simple and easy way of adding serial connections to your PC without having to go **through** inserting a serial card and traditional port configuration.

This USB to Serial adapter is ideal for connecting modems, cellular phones, PDAs, digital cameras, card readers and other serial devices to your computer. And since USB does not require any IRQ resource, more devices can be attached to the system without the previous hassles of device and resource conflicts.

Finally, the USB 2.0 Serial adapter is a fully USB Specification compliant device and therefore supports advanced power management such as suspend and resume operations as well as remote wakeup. The USB 2.0 Serial adapter is designed to work on all Windows operating systems.

Features & Specifications

- _ Smart USB to RS-232 (DB 9-pin male serial port) interface
- _ Supports various serial devices like modems, PDAs, cellular phones, digital cameras, card readers, and more.
- _ Easy Plug & Play Installation
- _ Supports the standard RS-232 Serial Interface
- _ Supports automatic handshake mode
- _ Supports Remote Wake-up and Intelligent Power Management
- _ Provides Dual Buffers for upstream and downstream data transfer
- _ No IRQ resource required
- _ Bus Powered – no separate power supply or battery required

System Requirements

- _ Windows 98, Windows ME, Windows 2000, or Windows XP operating system

- _ AMD or Intel Pentium 133MHz or better based computer
- _ USB2.0 or lower port

Installing the Device

This section will guide you on how to install the USB 2.0 Serial adapter under Windows XP, Windows 2000, Windows ME, and Windows 98 operating systems.

Note: *Please take notice of the installation order. First, plug in the USB to Serial adapter and then run the InstallShield wizard*

The following steps will show how to install the device under Windows XP. Basically, the procedures are also somewhat the same for other Windows operating systems.

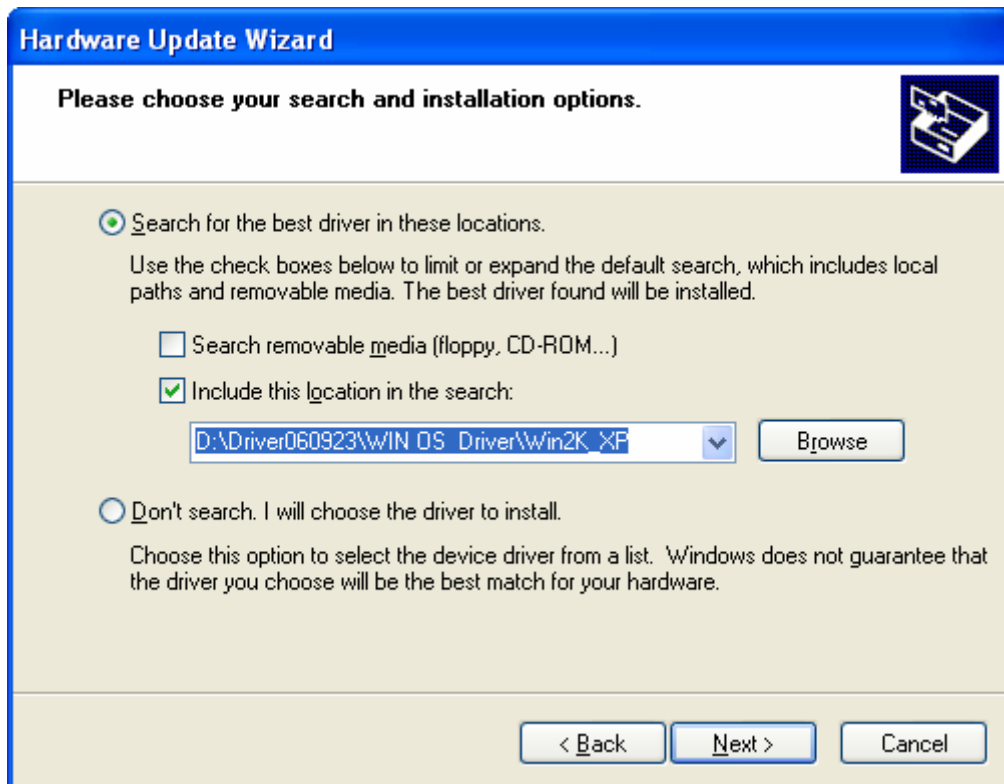
1. connect the USB 2.0 Serial adapter to the USB port on your PC, computer will find the new hardware automatically.



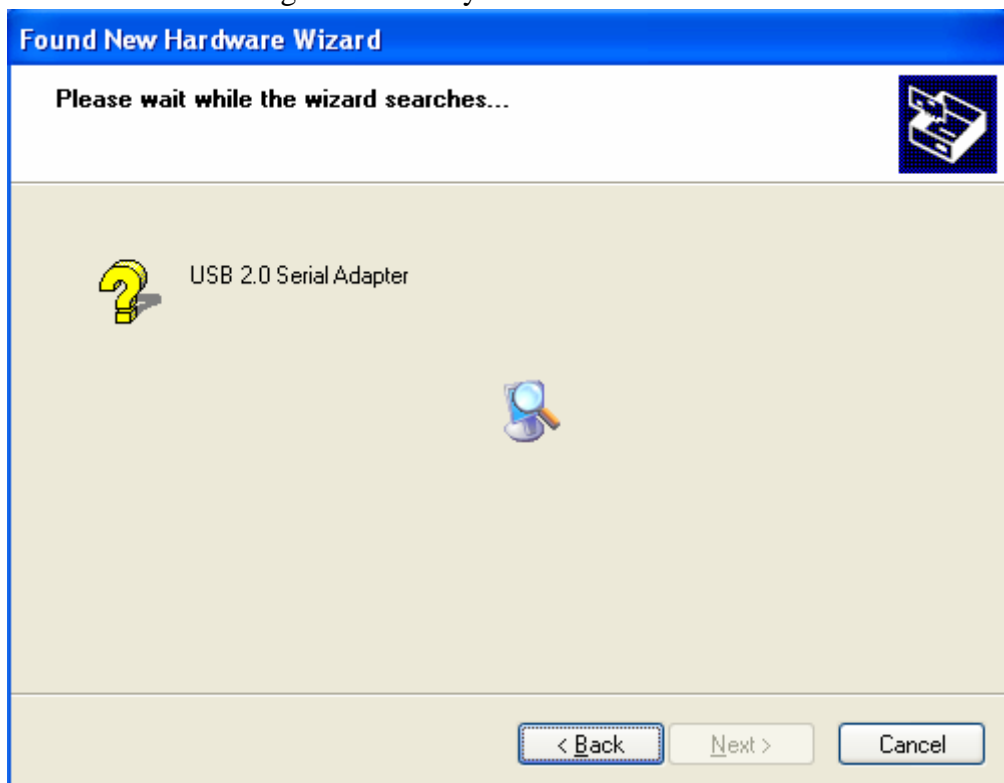
2. Welcome to the Found New Hardware Wizard page, choose “install from a list or specific location(Advanced)”, and click next.



3. Click “Browse” and choose the right driver in the CD-ROM, and click next



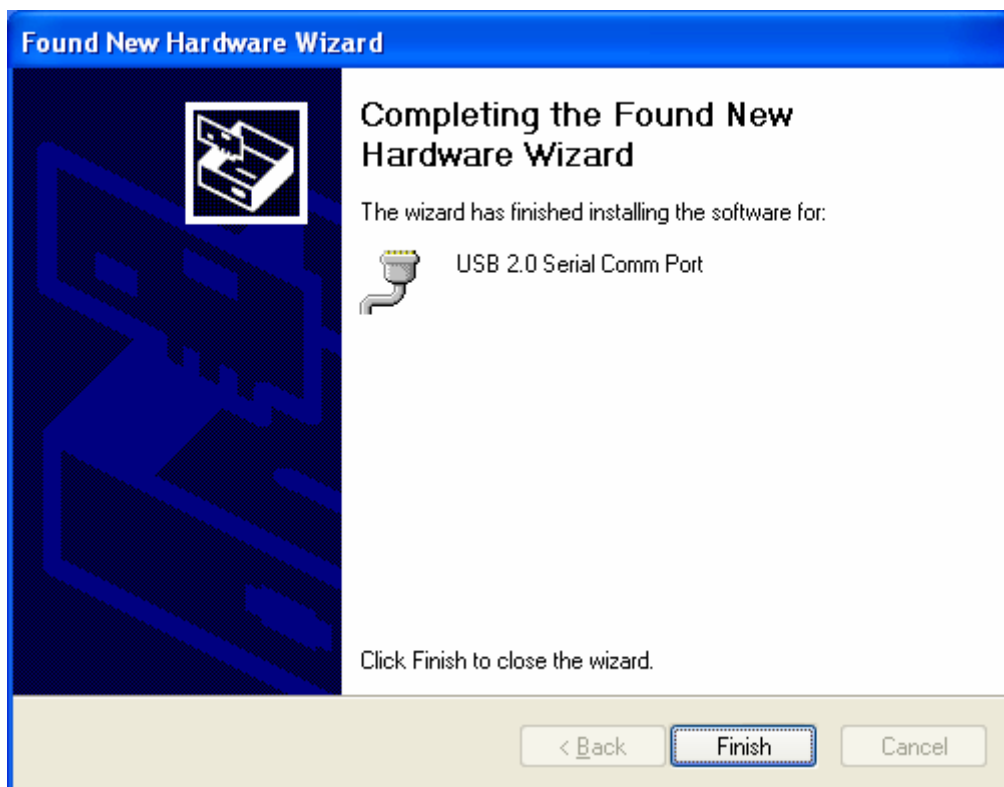
4. Hardware searching automatically.



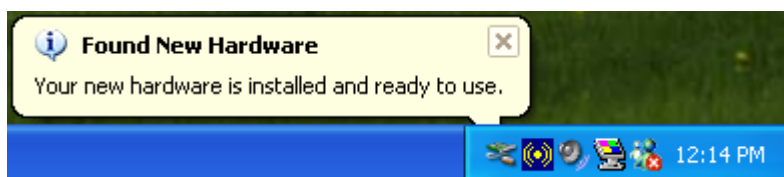
5. Software certification identified page (only under Windows XP system), please click "Continue Anyway."



6. Click finish to complete the installation.

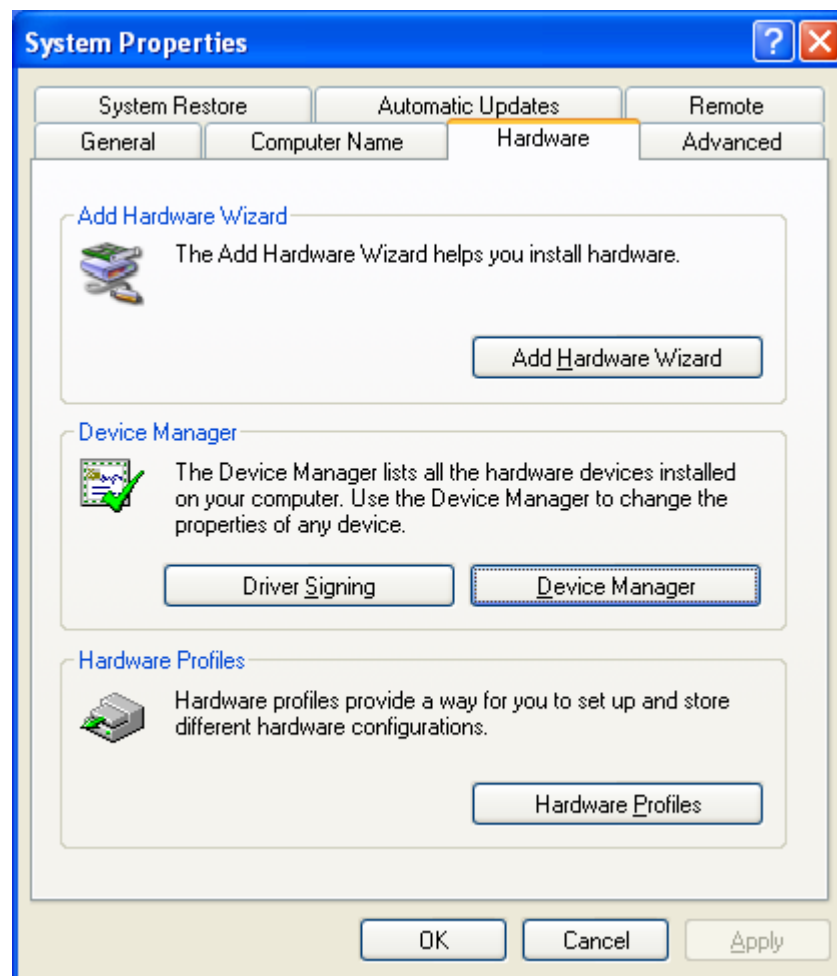


7. Hardware searching automatically.

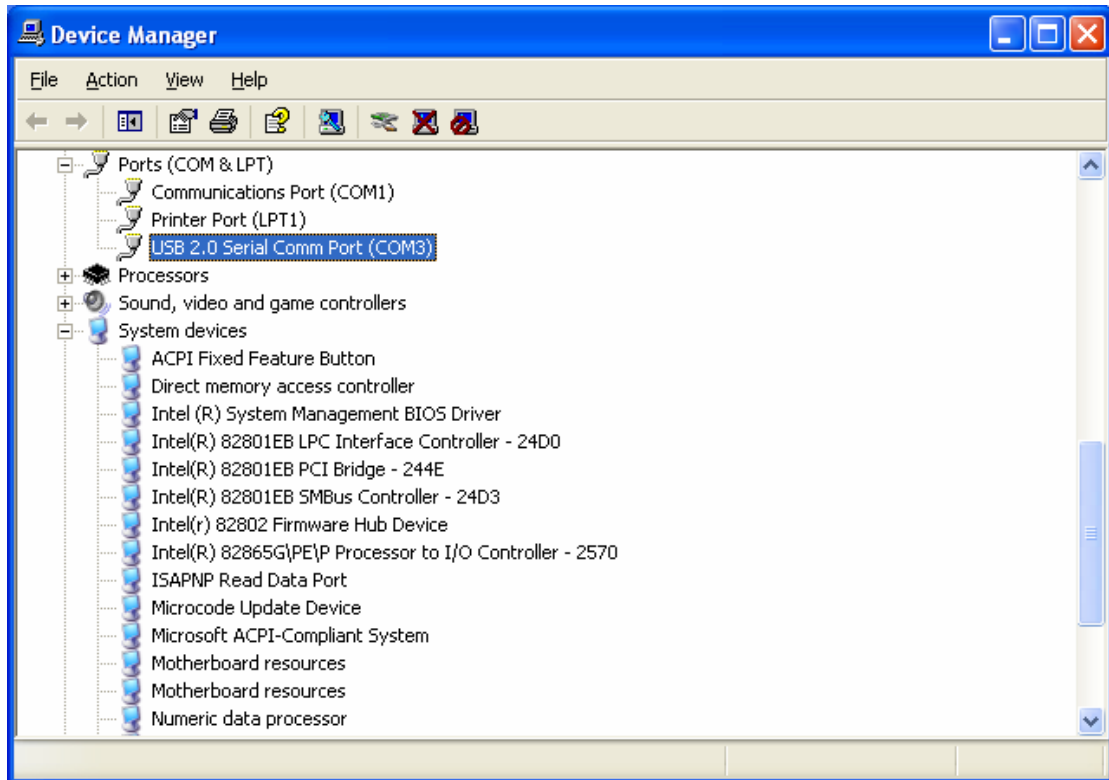


8. Click "my computer" by right key, select "property" and check the result of

installation.



9. You can see the device information by clicking “Device Manager”



10. Hardware running normally.

Disclaimer

Information in this document is subject to change without notice. The manufacturer does not make any representations or warranties (implied or otherwise) regarding the accuracy and completeness of this document and shall in no event be liable for any loss of profit or any other commercial damage, including but not limited to special, incidental, consequential, or other damages.

No part of this document may be reproduced or transmitted in any form by any means without the express written permission of the manufacturer.

All brand names and product names used in this document are trademarks or registered trademarks of their respective holders.